

## TRAFFIC ALERT

### Full weekend ramp closures – Logan Motorway eastbound off-ramp to Beaudesert Road southbound, Parkinson

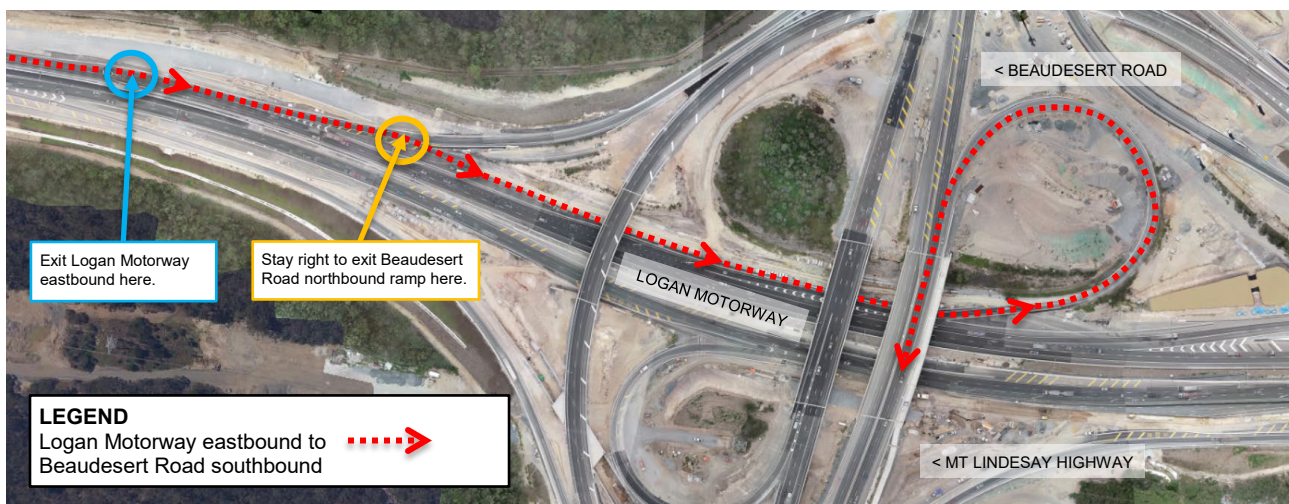
We're getting on with the job of upgrading your motorways. From **Friday 17 May 2019**, the Logan Motorway eastbound off-ramp to Beaudesert Road southbound will be temporarily closed for two full weekends to allow for asphaltting, barrier installation and traffic realignment activities.

Please note that from **5am Monday 27 May 2019**, traffic will run on the permanent design for Logan Motorway eastbound off-ramp to Beaudesert Road southbound (see map below).

During each closure, a detour will be in-place via the Wembley Road interchange (see over page).

#### Key dates:

- **8pm Friday 17 May until 5am Monday 20 May 2019.**
- **8pm Friday 24 May until 5am Monday 27 May 2019.**

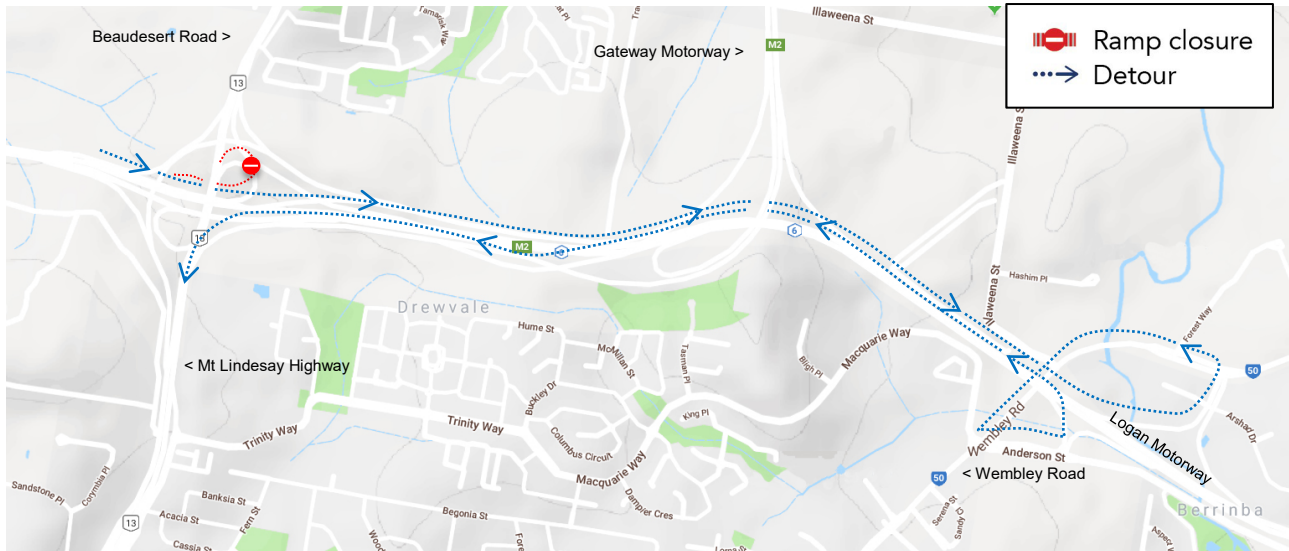


#### What to expect during these works:

- increased activity around the work area including the presence of workers, vehicles and equipment
- road construction and resurfacing, road pavement profilers, compaction rollers, body trucks, drainage, electrical conduits, line marking and use of hand tools, barrier relocation and installation of new signage
- traffic control and reduced speeds will be in place to ensure the safety of motorists and workers
- potential noise impacts from the use of machinery.

In the case of inclement weather or delays to the work, this work will be postponed to the next available shift. All works are scheduled to minimise impacts on the community and motorists. We thank you in advance for your patience during these works.

# LOGAN ENHANCEMENT PROJECT



## About the project

Transurban Queensland's \$512 million Logan Enhancement Project includes upgrading parts of the Logan and Gateway motorways, improving key congestion hot spots (Logan Motorway/Mt Lindesay Highway/Beaudesert Road interchange and the Wembley Road/Logan Motorway interchange) and constructing new south-facing ramps on the Gateway Motorway at Compton Road. Major construction is underway with the project anticipated to be completed in 2019.

## Keep updated about traffic changes

During construction of the Logan Enhancement Project we encourage you to plan ahead. For more information about upcoming traffic changes, view the [Road Users](#) page on the project website. Traffic information will also be posted on the [Queensland Traffic website](#) and provided to the 131940 call centre.

For more information about construction activities associated with the Logan Enhancement Project, please visit the project website (see below) or follow us on [Facebook](#).

## For more information

For more information about the project or to speak with a member of the Community Relations Team regarding these activities contact:

Phone: 1800 195 308 (toll free 24hours)\*  
Email: [contactus@loganenhancementproject.com.au](mailto:contactus@loganenhancementproject.com.au)  
Website: [www.loganenhancementproject.com.au](http://www.loganenhancementproject.com.au)  
Facebook: [facebook.com/LoganEP/](https://www.facebook.com/LoganEP/)

\*Free call anywhere in Australia. Call charges apply for mobile phones and pay phones. Check with your service provider for call costs.