

WORKS NOTIFICATION - UPDATED

June 2018

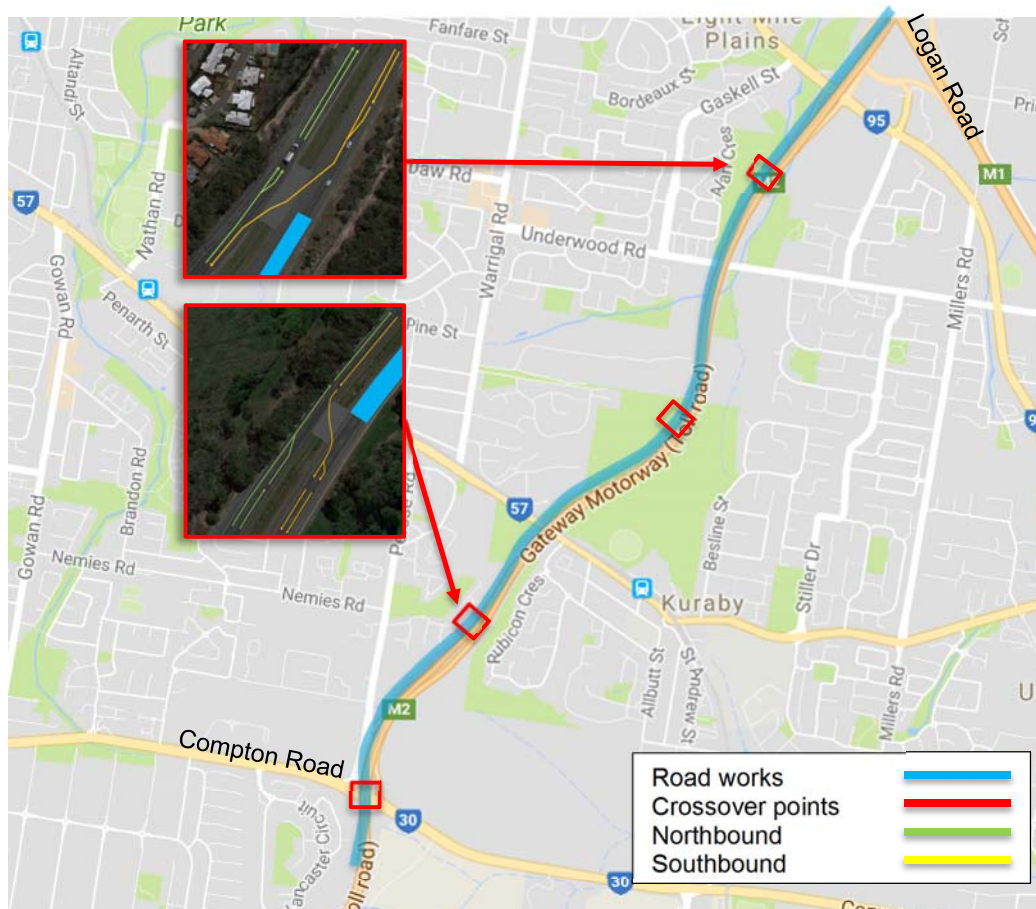
Road resurfacing works on the Gateway Motorway between Compton Road and Logan Road is progressing well.

This work continues to be undertaken each weekend from Friday 8pm to Monday 5am, and is ongoing until late 2018, construction and weather permitting.

- **From 8pm Friday 22 June until 5am Monday 25 June 2018, an extended contraflow arrangement will be in place on the southbound carriageway of the Gateway Motorway from north of Compton Road to south of Logan Road.**

This involves full closure of the northbound carriageway, with traffic using the southbound carriageway to travel in either direction. Motorists will use crossover points (see map below) that have been built which allow vehicles to cross the median into the opposite carriageway. This arrangement will allow road resurfacing work to be undertaken on the closed carriageway. During the works, speed limits will be reduced for the safety of motorists and workers.

We encourage you to plan ahead and allow extra travel time for your trip.



LOGAN ENHANCEMENT PROJECT

What to expect:

- increased activity around the work area including the presence of workers, vehicles and equipment
- road construction and resurfacing, road pavement profilers, compaction rollers, body trucks, line marking and use of hand tools
- changed traffic conditions and the use presence of traffic control and reduced speeds to ensure the safety of motorists and workers
- night works and potential noise impacts from the use of machinery.

All works are scheduled to minimise impacts on the community and motorists. We thank you in advance for your patience during these works.

About the project

Transurban Queensland's \$512 million Logan Enhancement Project includes upgrading parts of the Logan and Gateway motorways, improving key congestion hot spots (Logan Motorway/Mt Lindesay Highway/Beaudesert Road interchange and the Wembley Road/Logan Motorway interchange) and constructing new south-facing ramps on the Gateway Motorway at Compton Road. Major construction is underway with the project anticipated to be completed in 2019.

Keep updated about traffic changes

During construction of the Logan Enhancement Project we encourage you to plan ahead. For more information about upcoming traffic changes, view the [Road Users](#) page on the project website. Traffic information will also be posted on the [Queensland Traffic website](#) and provided to the 131940 call centre.

For more information about construction activities associated with the Logan Enhancement Project, please visit the project website (see below) or follow us on [Facebook](#).

For more information

For more information about the project or to speak with a member of the Community Relations Team regarding these activities contact:

Phone: 1800 195 308 (toll free 24hours)*
Email: contactus@loganenhancementproject.com.au
Website: www.loganenhancementproject.com.au
Facebook: facebook.com/LoganEP/

*Free call anywhere in Australia. Call charges apply for mobile phones and pay phones. Check with your service provider for call costs.